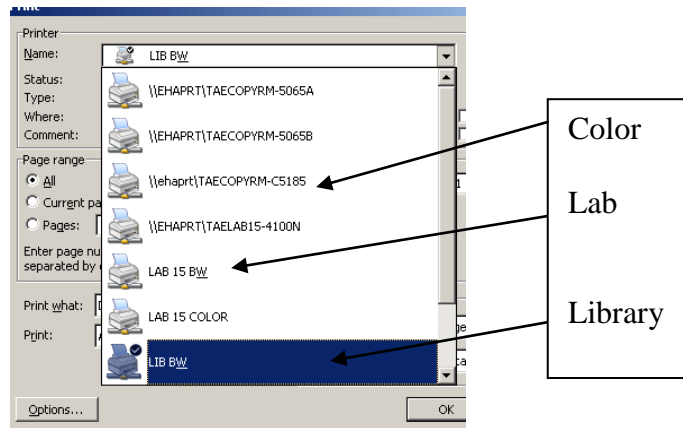
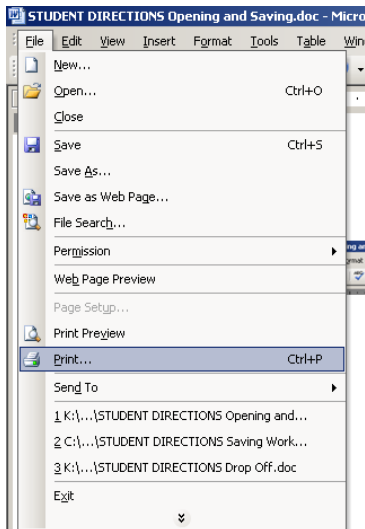


# STUDENT DIRECTIONS PRINTING



You should be able to simply click the print icon wherever you are to print to the correct black and white (not color) printer.

Or you can click "File" then "Print" and select the printer from there. Choose this option when you need more than one copy or a color copy.



In the library the default printer should be set to the 2100 or the LIB BW.

In the lab it's the 4100 or LAB BW.

The only color printer is the C5185.