



CHEETAH'S

CREATED BY: CARLY HOLMES

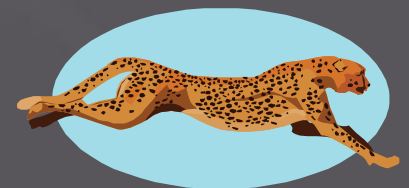


About the Cheetah

Cheetah's are very cool and fascinating but one thing I have always been wondering is...

How are Cheetah's different from other big cats?

I know a couple of things about how Cheetah's are different from other big cats. They are smaller than other cats but they are the fastest animals on earth. Unlike other big cats Cheetah's hardly ever attack people.



Speed

A Cheetah's speed is just fascinating, a Cheetah's speed is defiantly different from other big cats. Cheetah's are the fastest animals on earth a Cheetah can run up to 70 mph, that's faster than a car can drive on the high way! Cheetah's have extra big lungs and heart so when the Cheetah runs it can take bigger and deeper breaths. A cheetah can only run at full speed for 900 feet then they get tired and need a rest.



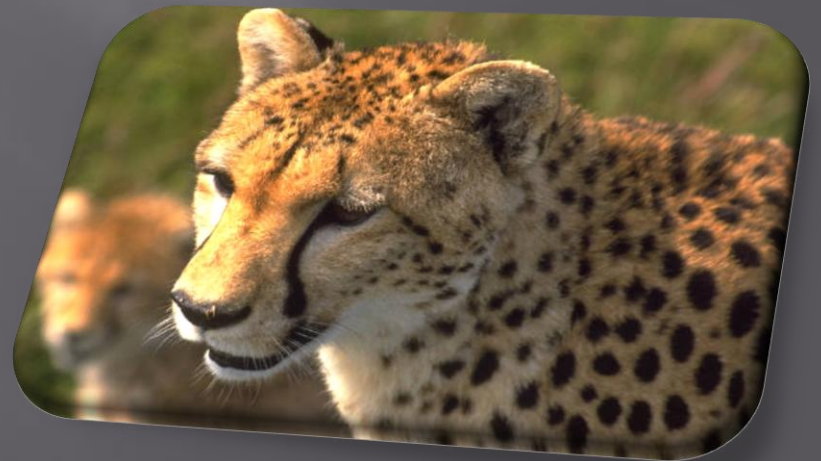
How the Cheetah kills it's prey

A cheetah creeps up on it's prey being as quiet as possible, then it starts to run really fast . Within a second the Cheetah catches up with it's prey and get's it's feet ready to pounce. Then the Cheetah leaps up, claws out and teeth ready to bit into the neck of the prey. Then it leaps on top of the animal and claws it and then bites it's prey in the neck.



Stripes

If you look at the picture below there are two black strips running down the cheetah's face from the eyes to the nose. Those striped lines help the cheetah shade their eyes . They are called stripe marks.



Cheetah's fur

Cheetah's have beautiful coats, the fur is yellowish, goldish with black speckles. A cheetah looks like a leopard so when you see a leopard and or a cheetah don't get confused with the fur.



Body/Weight

Cheetah's have a slender body, and long legs that helps them attain speed. They have very sharp teeth, and sharp claws. They have a long tail so they curve it up so they don't trip over the tail when running. A cheetah is about 120 to 127 pounds, that's pretty skinny. They need to keep skinny so they can run without any problems.



Baby Cheetah's

A mother cheetah is very protective with it's baby. If an animal comes near a mother and or a mothers baby the mother will get up and chase the animal away acting as if she were going to kill the animal, then she will return back to her baby's. A baby cheetah stay's with it's mother until it get's big enough to defend it's self then it will leave the mother. The mother teaches it's baby how to catch food, to protect it's self from an animal trying to hurt the cheetah.

