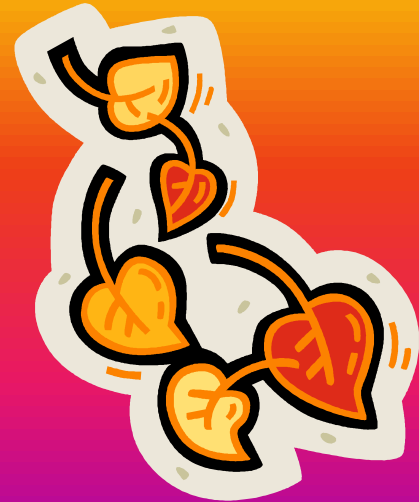


Leaves

Created by Cassidy Black

How do leaves change color?



Why Leaves Are Green

In each leaf there is a pigment called chlorophyll. Pigments are natural colorings found in leaves. Chlorophyll is the pigment that makes leaves green.



Pigment Facts

Plants often have accessory pigments that absorb different wavelengths of sunlight. When some pigments die, others are made by the extra sugar. Sunlight makes the sugar into pigments. This causes some leaves to turn red, rust, or purple. There are millions of little packages in each leaf.

These are a few:

Chlorophyll = green

Xanthophylls = yellow

Carotenoids = orange



Chlorophyll Facts

Light produces chlorophyll so as the days get shorter, less chlorophyll is produced. Not producing chlorophyll is how trees respond to less sunlight. Chlorophyll absorbs from sunlight energy that is used in transforming carbon dioxide and water to carbohydrates, such as sugars and starch.



Chlorophyll Disappearing

When it gets colder trees don't need the chlorophyll from the leaves anymore so the green color goes away and this causes the leaves to become red, orange, yellow, and brown.



THE

END