

Writing Cinema Reviews





Two Ways

Answer the Questions on my sheet.

- Cinema - Mr. Fleck
- Cinema Film Review Sheet
-
- **DIRECTIONS:** As the film runs, answer the following questions using specific details from the film. You may use a separate sheet of paper.
-
- 1. How is the setting established in the film?
- 2. How are the main characters introduced in the film?
- 3. How is the conflict introduced?

Write your own newspaper-style review.

- **The Wolfman (2010) is a remake of Universal's 1941 horror classic with Benecio del Toro starring as Lawrence Talbot, the role made famous by Lon Chaney, Jr.**
- **Set in the 1800's, this new version begins when Talbot returns home following the death of his brother. Talbot's father, Sir John (Anthony Hopkins) is a disturbed man who is**

Whichever you choose to do,
remember, “More is better!”



Whichever you choose to do,
remember, “More is better!”



- MORE:

Whichever you choose to do,
remember, “More is better!”



- MORE:
- Details

Whichever you choose to do,
remember, “More is better!”



- MORE:
- Details
- Description

Whichever you choose to do,
remember, “More is better!”



- MORE:
- Details
- Description
- Complete Sentences

Whichever you choose to do,
remember, “More is better!”



- MORE:
- Details
- Description
- Complete Sentences
- Opinion

Whichever you choose to do,
remember, “More is better!”



- MORE:
- Details
- Description
- Complete Sentences
- Opinion
- Evidence that you understand the film



Example: **Bad**

Example: **Bad**

- 1. How is the setting established in the film?

Example: **Bad**

- 1. How is the setting established in the film?





Example: Good

Example: Good

- 1. How is the setting established in the film?

Example: Good

- 1. How is the setting established in the film?





Example: **Bad**

Example: **Bad**

- 2. How are the main characters introduced in the film?

Example: **Bad**

- 2. How are the main characters introduced in the film?





Example: Good

Example: Good

- 2. How are the main characters introduced in the film?

Example: Good

- 2. How are the main characters introduced in the film?



With each question, think:



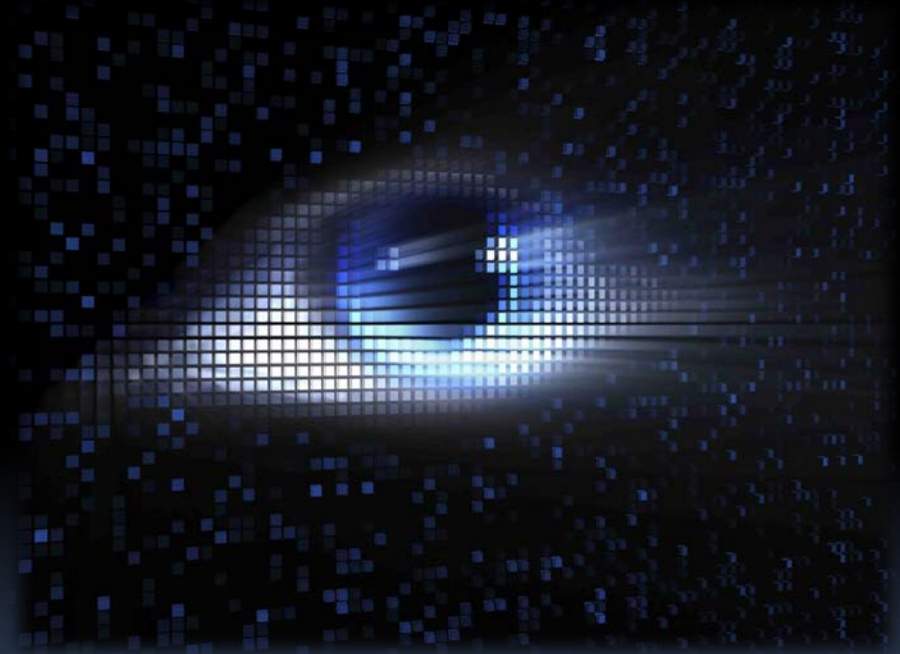
With each question, think:


- What do we see?



With each question, think:

- What do we see?
- How can I describe it?






Questions 9 & 10: Different Audiences

Film Class

Friends




Questions 9 & 10: Different Audiences

Film Class

- People studying films.

Friends




Questions 9 & 10: Different Audiences

Film Class

- People studying films.

Friends

- People you hang out with.



Questions 9 & 10: Different Audiences

Film Class

- People studying films.

Friends

- People you hang out with.

- Don't confuse the two.

They get easier the more you do them.

