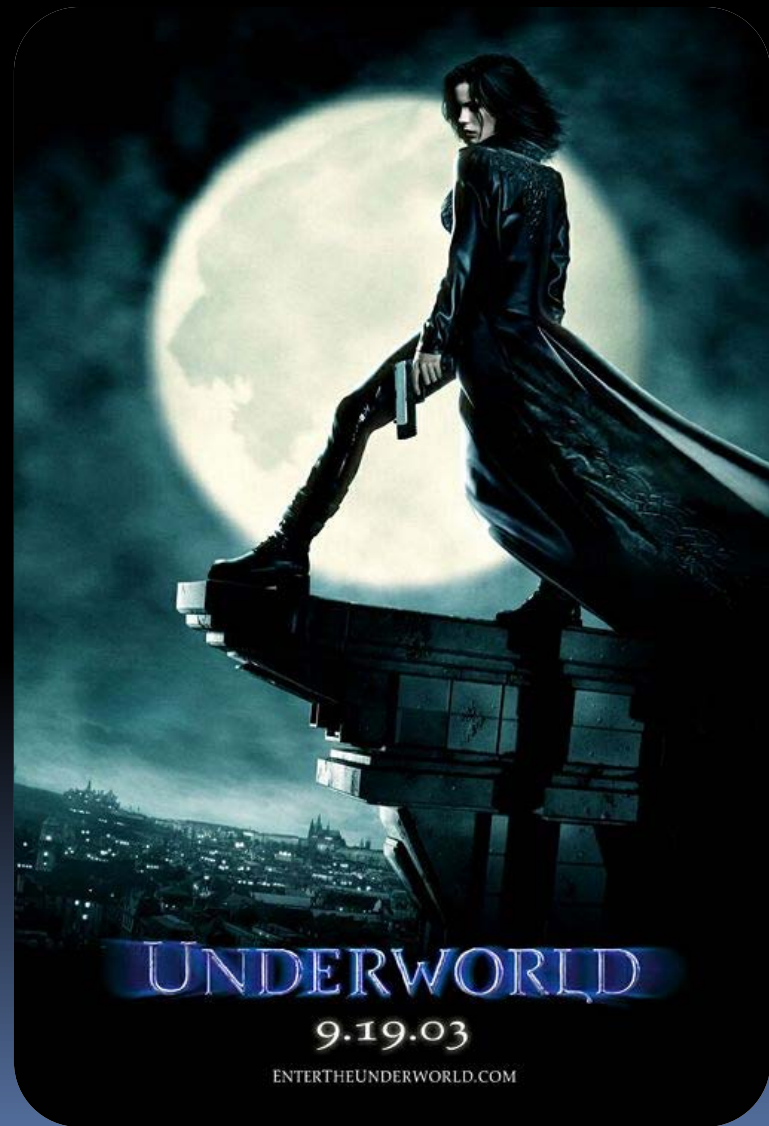


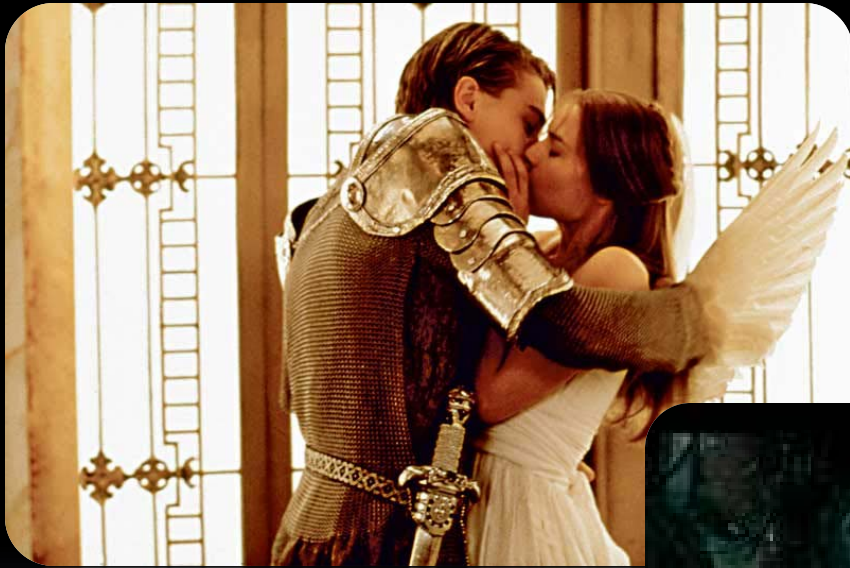
Underworld (2003)



A vampire warrior falls into forbidden love with a werewolf.



Kind of a Goth take on Romeo and Juliet..



Origins



Origins

- Director Len Wiseman came up with the story



Origins

- Director Len Wiseman came up with the story
- (He also ended up with Kate Beckinsale)



Origins

- Director Len Wiseman came up with the story
- (He also ended up with Kate Beckinsale)
- Wiseman got his start as a director of TV commercials and music videos.



The star: Kate Beckinsale



Kate Beckinsale

Ring

The star: Kate Beckinsale

- Kate had built a career as a 'serious' actress



Kate Beckinsale

Ring

The star: Kate Beckinsale

- Kate had built a career as a 'serious' actress
- She was Wiseman's first choice for Selene



Kate Beckinsale

Ring

The star: Kate Beckinsale



- Kate had built a career as a 'serious' actress
- She was Wiseman's first choice for Selene
- He never thought she'd agree

The star: Kate Beckinsale



- Kate had built a career as a 'serious' actress
- She was Wiseman's first choice for Selene
- He never thought she'd agree
- She was thrilled to take the part.

In Support



**Michael Sheen as werewolf king
Lucian**



Scott Speedman as Michael Corvin

...And Viktor, the Vampire King



...And Viktor, the Vampire King



- British actor Bill Nighy plays the part.

Effects



UNDERWORLD - WEREWOLF DESIGN

UNDERWORLD - WEREWOLF DESIGN

Effects



- Wiseman and company wanted to avoid CGI

Effects



- Wiseman and company wanted to avoid CGI
- He also wanted a look for the werewolves that hadn't been seen before

Guys In Suits



Custom mannequin and base created to display an original Lycan costume from the Underworld Series

original Lycan costume from the Underworld Series
Custom mannequin and base created to display an

Guys In Suits

- The SFX department rigged up suits according to Wiseman's designs



Custom mannequin and base created to display an original Lycan costume from the Underworld Series

original Lycan costume from the Underworld Series
Custom mannequin and base created to display an

Guys In Suits

- The SFX department rigged up suits according to Wiseman's designs
- Leg extensions increased height



Custom mannequin and base created to display an original Lycan costume from the Underworld Series

original Lycan costume from the Underworld Series
Custom mannequin and base created to display an

Guys In Suits

- The SFX department rigged up suits according to Wiseman's designs
- Leg extensions increased height
- The faces were animatronic



Custom mannequin and base created to display an original Lycan costume from the Underworld Series

original Lycan costume from the Underworld Series
Custom mannequin and base created to display an

Set Design



Set Design

The film creates a dark alternate world where the war between the supernatural creatures makes perfect sense.



Underworld is next.

